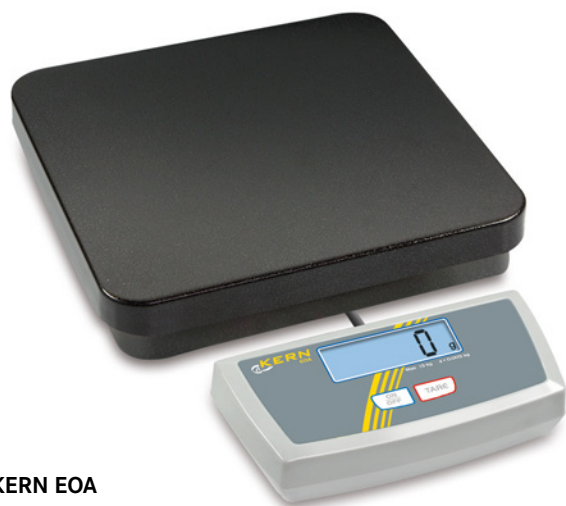
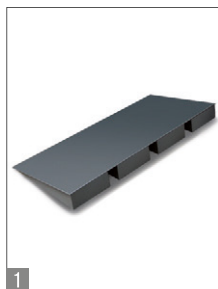


# Parcel scales KERN EOA · EOE



KERN EOA



KERN EOE

Parcel scale for fast and easy weighing in the office, production, dispatch etc.

## Features

- **High mobility:** Battery operation, compact, flat construction and low weight make this scale ideal for the use in several locations
- Weighing plate steel, lacquered

### EOA:

- **Simple and convenient 2-key operation**
- **Adjusting program CAL**, external test weights at an additional price, see page 165 ff.

### EOE:

- **Wall mount** for display device standard
- **Vibration-free weighing:** When the weighing conditions are unstable, a stable weight is calculated determining an average value

## Technical data

- Large LCD display, digit height 25 mm
- Permissible ambient temperature 10 °C / 35 °C
- Ready for use: Batteries included, 9 V Block (EOA) / 6 x 1.5 V AA (EOE), operating time up to 60 h

### EOA:

- Dimensions of display device WxDxH 226x55x111 mm

### EOE:

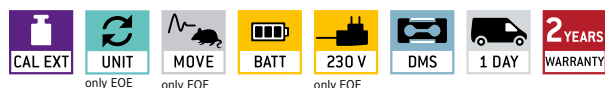
- Dimensions of display device WxDxH 210x110x45 mm

## Accessories

### EOE:

- **Ascending ramp** incl. pair of base plates for models with weighing plate size WxD 505x505 mm, not included. WxDxH 505x507x61 mm, can be retrofitted, KERN EOE-A02
- **Non-slip rubber mat**, WxD 945x505 mm, KERN EOE-A01
- **Sturdy transport case**, for models with weighing plate size ≤ 315x305x65 mm, for details see page 162, KERN MPS-A07

### STANDARD



### OPTION



| Model         | Weighing range [Max] kg | Readout [d] g | Reproducibility g | Linearity g | Net weight approx. kg | Cable length approx. m | Weighing plate mm | Option     |                           |
|---------------|-------------------------|---------------|-------------------|-------------|-----------------------|------------------------|-------------------|------------|---------------------------|
|               |                         |               |                   |             |                       |                        |                   | DAkks KERN | DAkks Calibr. Certificate |
| KERN          |                         |               |                   |             |                       |                        |                   |            |                           |
| EOA 10K-3     | 15                      | 5             | 5                 | ± 25        | 3                     | 1,4                    | 315x305x30        | 963-128    |                           |
| EOA 30K-2     | 35                      | 10            | 10                | ± 50        | 3                     | 1,4                    | 315x305x30        | 963-128    |                           |
| EOA 50K-2     | 60                      | 20            | 20                | ± 100       | 3                     | 1,4                    | 315x305x30        | 963-129    |                           |
| EOA 100K-2    | 150                     | 50            | 50                | ± 250       | 3                     | 1,4                    | 315x305x30        | 963-129    |                           |
| EOE 15K10     | 15                      | 10            | 10                | ± 20        | 4                     | 1,8                    | 315x305x65        | 963-128    |                           |
| EOE 35K20     | 35                      | 20            | 20                | ± 40        | 4                     | 1,8                    | 315x305x65        | 963-128    |                           |
| EOE 60K50     | 60                      | 50            | 50                | ± 100       | 4                     | 1,8                    | 315x305x65        | 963-129    |                           |
| EOE 150K50L   | 150                     | 50            | 50                | ± 100       | 12,5                  | 2,7                    | 505x505x65        | 963-129    |                           |
| EOE 150K50XL  | 150                     | 50            | 50                | ± 100       | 19,5                  | 2,7                    | 945x505x65        | 963-129    |                           |
| EOE 150K100   | 150                     | 100           | 100               | ± 200       | 4                     | 1,8                    | 315x305x65        | 963-129    |                           |
| EOE 300K100L  | 300                     | 100           | 100               | ± 200       | 12,5                  | 2,7                    | 505x505x65        | 963-129    |                           |
| EOE 300K100XL | 300                     | 100           | 100               | ± 200       | 19,5                  | 2,7                    | 945x505x65        | 963-129    |                           |

# KERN Pictograms

|  |   |  |
|--|---|--|
|  <b>Internal adjusting:</b> Quick setting up of the balance's accuracy with internal adjusting weight (motordriven).                             |  <b>Recipe level A:</b> Separate memory for the weight of the tare container and the recipe ingredients (net total).   |  <b>Suspended weighing:</b> Load support with hook on the underside of the balance.   |
|  <b>Adjusting program CAL:</b> For quick setting up of the balance's accuracy. External adjusting weight required.                               |  <b>Recipe level B:</b> Internal memory for complete recipes with name and target value of the recipe ingredients. User guidance through display.  |  <b>Battery operation:</b> Ready for battery operation. The battery type is specified for each device.                      |
|  <b>Memory:</b> Balance memory capacity, e.g. for article data, weighing data, tare weights, PLU etc.  |  <b>Recipe level C:</b> Internal memory for complete recipes with name and target value of the recipe ingredients. User guidance through display. Additional convenient functions, such as barcode and back calculation functions. |  <b>Rechargeable battery pack:</b> Rechargeable set.  |
|  <b>Data interface RS-232:</b> To connect the balance to a printer, PC or network.   |  <b>Totalising level A:</b> The weights of similar items can be added together and the total can be printed out.   |  <b>Mains adapter:</b> 230V/50Hz in standard version for EU. On request GB, AUS or USA version available.                   |
|  <b>RS-485 data interface:</b> To connect the balance to a printer, PC or other peripherals. High tolerance against electromagnetic disturbance. |  <b>Totalising level C:</b> Internal memory for complete recipes with name and target value of the recipe ingredients. User guidance through display. Additional convenient functions, such as barcode and back calculation.       |  <b>Power supply:</b> Integrated in balance. 230V/50Hz standard EU. More standards e.g. GB, AUS or USA on request.          |
|  <b>USB data interface:</b> To connect the balance to a printer, PC or other peripherals.  |  <b>Strain gauges:</b> Electrical resistor on an elastic deforming body.   |  |
|  <b>Bluetooth data interface:</b> To transfer data from the balance to a printer, PC or other peripherals.                                       |  <b>Tuning fork principle:</b> A resonating body is electromagnetically excited, causing it to oscillate.  |  |
|  <b>WLAN data interface:</b> To transfer data from the balance to a printer, PC or other peripherals.  |  <b>Percentage determination:</b> Determining the deviation in % from the target value (100 %).  |  <b>Electromagnetic force compensation:</b> Coil inside a permanent magnet. For the most accurate weighings.                |
|  <b>Control outputs (optocoupler, digital I/O):</b> To connect relays, signal lamps, valves, etc.  |  <b>Weighing units:</b> Can be switched to e.g. non-metric units at the touch of a key. See balance model. Please refer to KERN's website for more details.  |  <b>Single cell technology:</b> Advanced version of the force compensation principle with the highest level of precision. |
|  <b>Interface for second balance:</b> For direct connection of a second balance.   |  <b>Weighing with tolerance range:</b> Upper and lower limiting values can be programmed individually for e.g. dosing, sorting and portioning.   |  <b>Verification possible:</b> The time required for verification is specified in the pictogram.                          |
|  <b>Network interface:</b> For connecting the scale to an Ethernet network. With KERN products you can use a universal RS-232/LAN converter.   |  <b>Vibration-free weighing:</b> (Animal weighing program) When the weighing conditions are unstable, a stable weight is calculated as an average value.   |  <b>DAkkS calibration possible:</b> The time required for DAkkS calibration is shown in days in the pictogram.            |
|  <b>GLP/ISO log:</b> The balance displays the weight, date and time, regardless of a printer connection.                                       |  <b>Protection against dust and water splashes IPxx:</b> The type of protection is shown in the pictogram. For details see the glossary.   |  <b>Package shipment:</b> The time required for internal shipping preparations is shown in days in the pictogram.         |
|  <b>GLP/ISO log:</b> With weight, date and time. Only with KERN printers, see "Accessories"  |  <b>ATEX explosion protection:</b> Suitable for use in hazardous industrial environments, in which there is explosion danger. The ATEX marking is specified for each device.   |  <b>Pallet shipment:</b> The time required for internal shipping preparations is shown in days in the pictogram.          |
|  <b>Piece counting:</b> Reference quantities selectable. Display can be switched from piece to weight.   |  <b>Stainless steel:</b> The balance is protected against corrosion.   |  <b>Warranty:</b> The warranty period is shown in the pictogram.  |

## Precision is our business

To ensure the high precision of your balance KERN offers you the the appropriate test weight in the international OIML error limit classes E1-M3 from 1 mg - 2000 kg. In combination with a DAkkS calibration certificate the best pre-requisite for proper balance calibration.

The KERN DAkkS calibration laboratory today is one of the most modern and best-equipped DAkkS calibration laboratories for balances, test weights and force-measurement in Europe.

## Your KERN specialist dealer:

Thanks to the high level of automation, we can carry out DAkkS calibration of balances, test weights and force-measuring devices 24 hours a day, 7 days a week.

### Range of services:

- DAkkS calibration of balances with a maximum load of up to 6 t
- DAkkS calibration of weights in the range of 1 mg - 500 kg
- Database supported management of checking equipment and reminder service
- Calibration of force-measuring devices
- DAkkS calibration certificates in the following languages D, GB, F, I, E, NL